

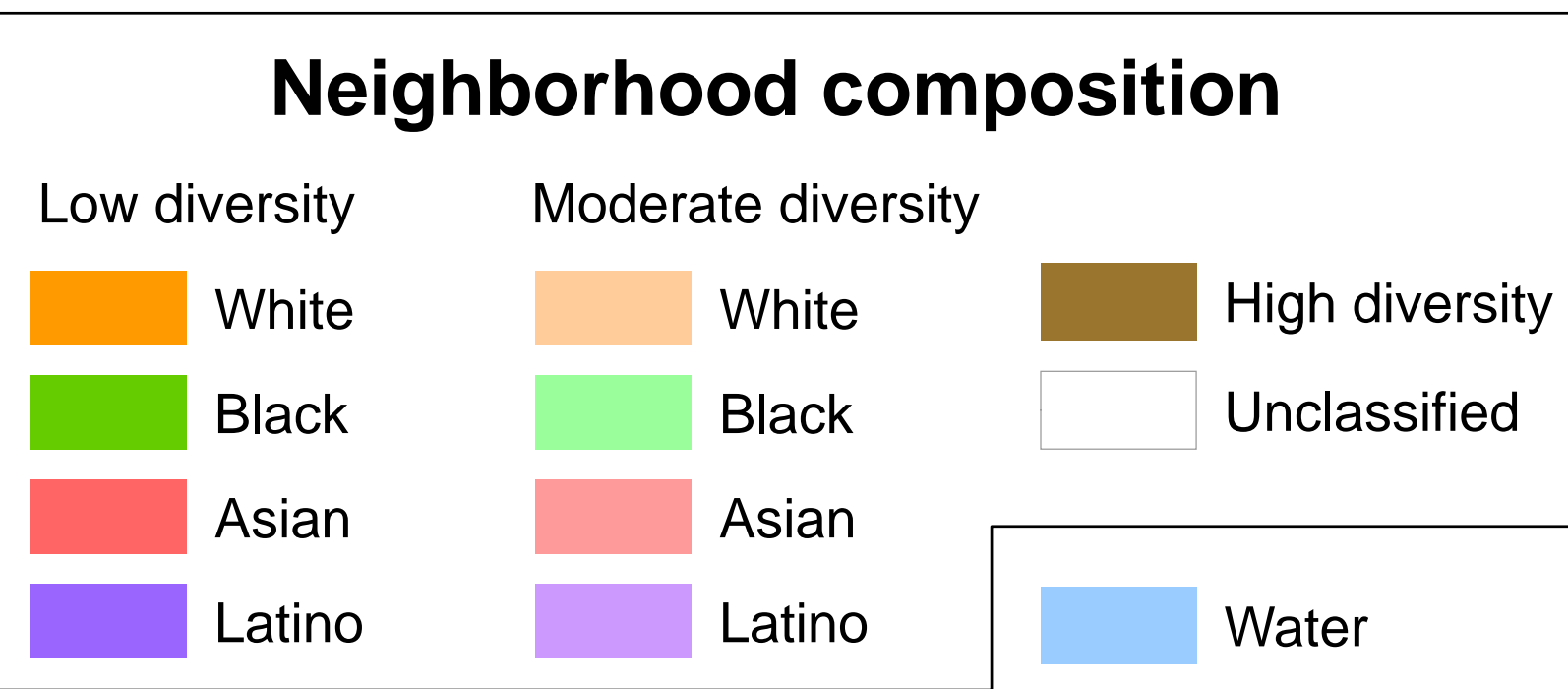
MAPPING THE EVOLUTION OF RACIALLY MIXED AND SEGREGATED NEIGHBORHOODS IN CHICAGO

Jonathan Chipman [1], Richard Wright [1], Mark Ellis [2], and Steven R. Holloway [3]

[1] Department of Geography, Dartmouth College, Hanover NH 03755 USA

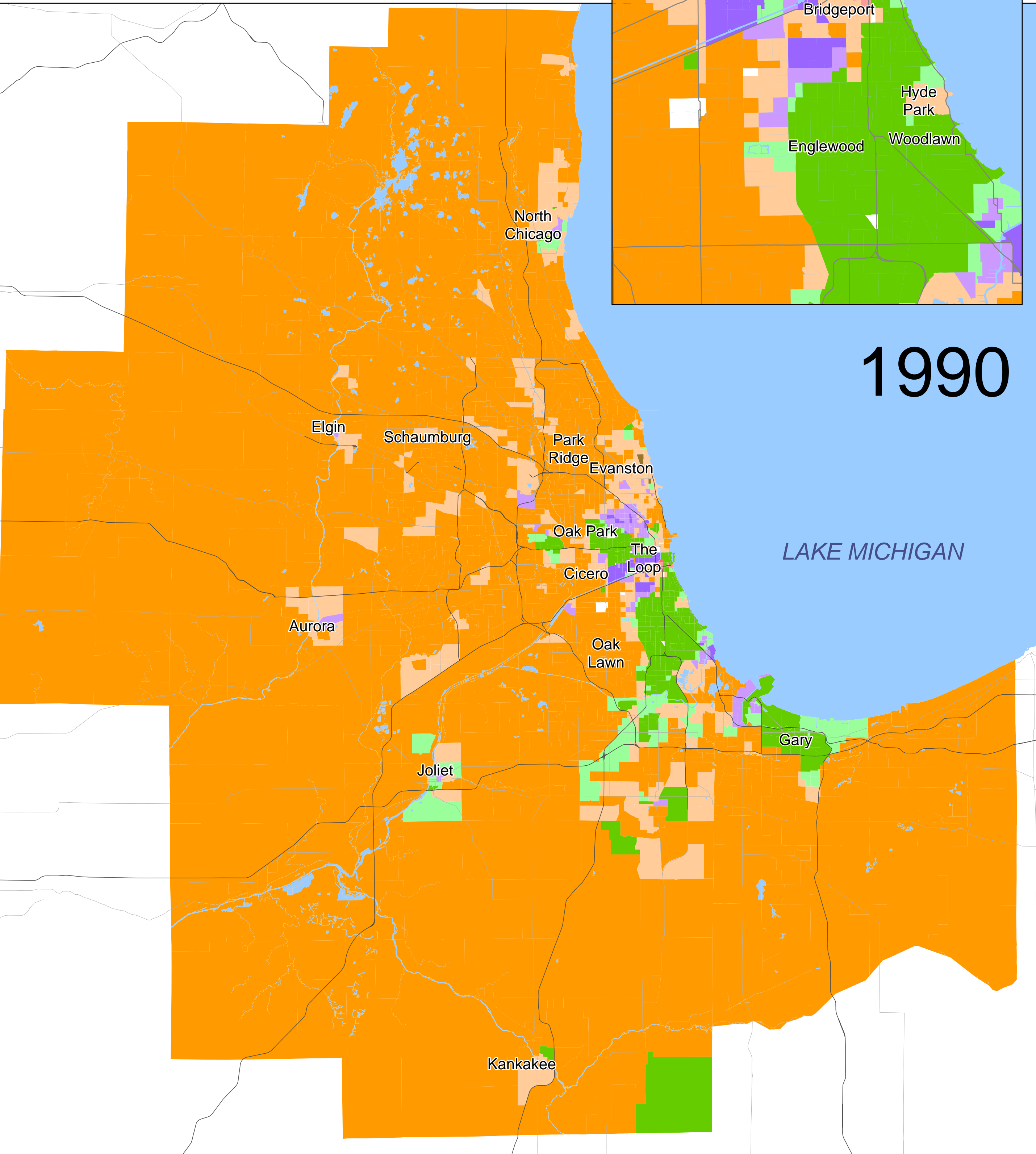
[2] Department of Geography, University of Washington, Seattle WA 98195 USA

[3] Department of Geography, University of Georgia, Athens GA 30602 USA

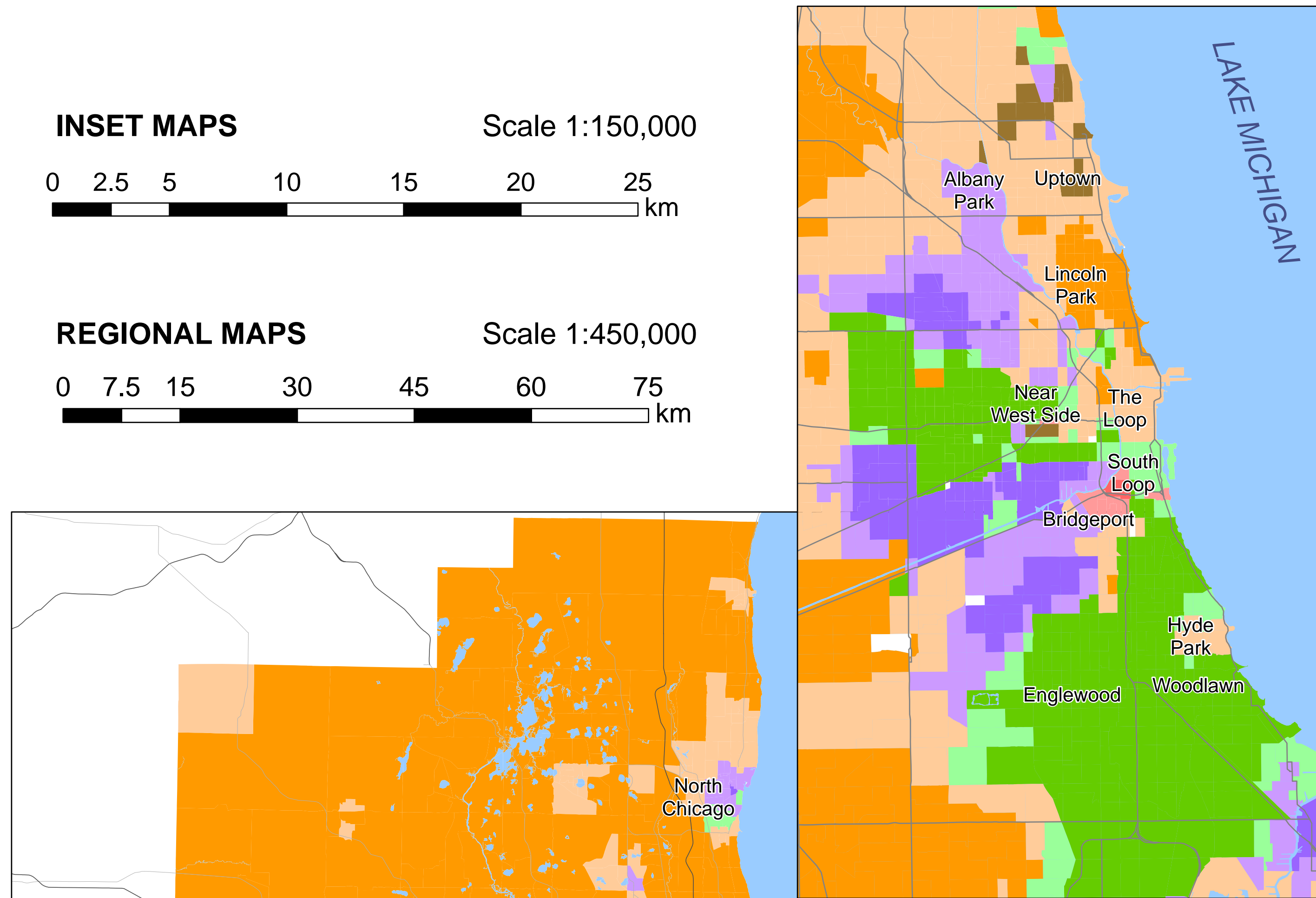


Based on US census data. For details on the classification method, see:

Holloway, S., R. Wright, and M. Ellis 2012. The racially fragmented city? Neighborhood racial segregation and diversity jointly considered. Professional Geographer, 64: 63-82.



1990



INSET MAPS

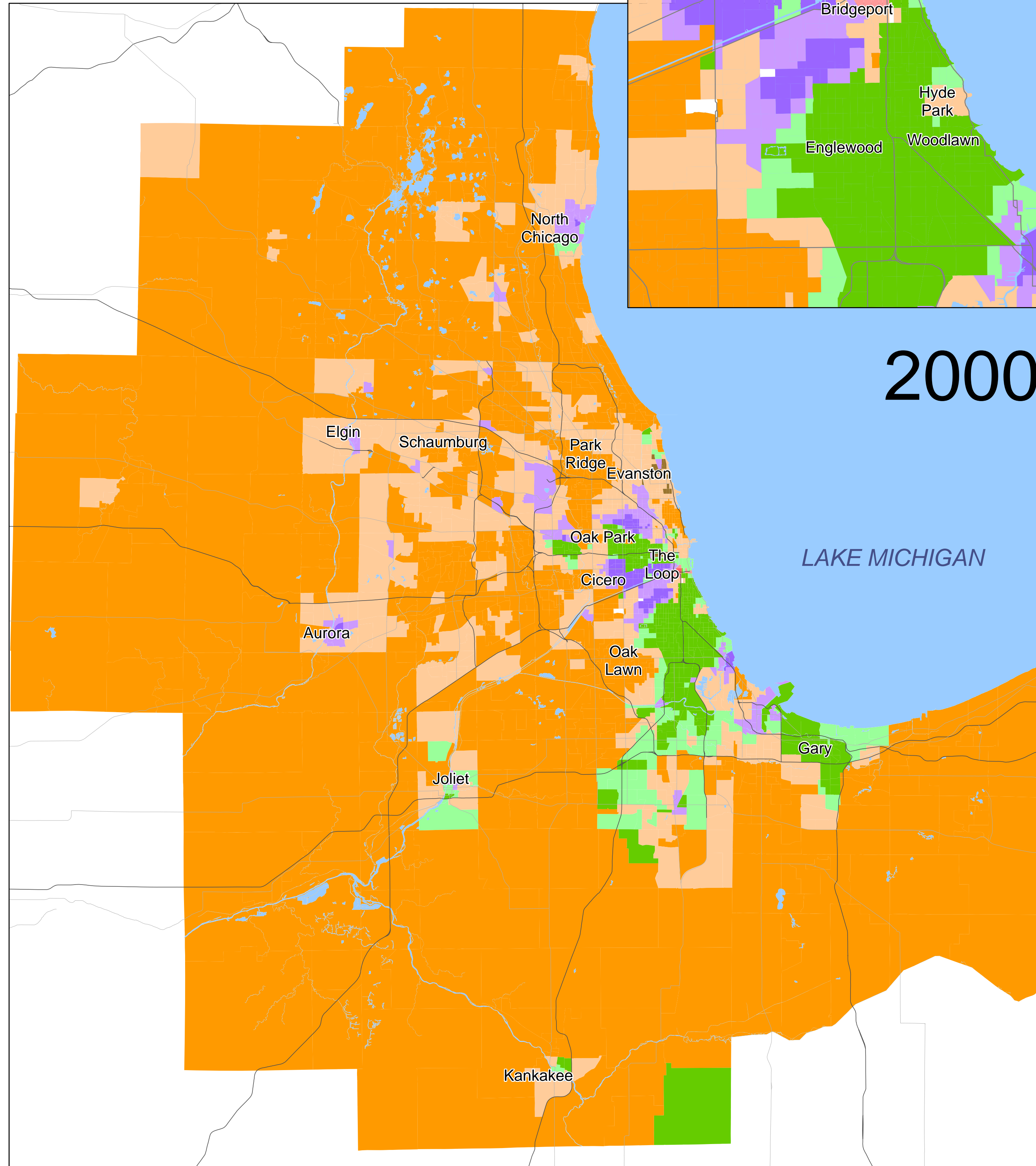
Scale 1:150,000

0 2.5 5 10 15 20 25 km

REGIONAL MAPS

Scale 1:450,000

0 7.5 15 30 45 60 75 km



2000



COPYRIGHT: (c) Journal of Maps, 2012.

Please visit our interactive digital atlas of segregation and diversity in US states and metropolitan areas online at <http://mixedmetro.com>

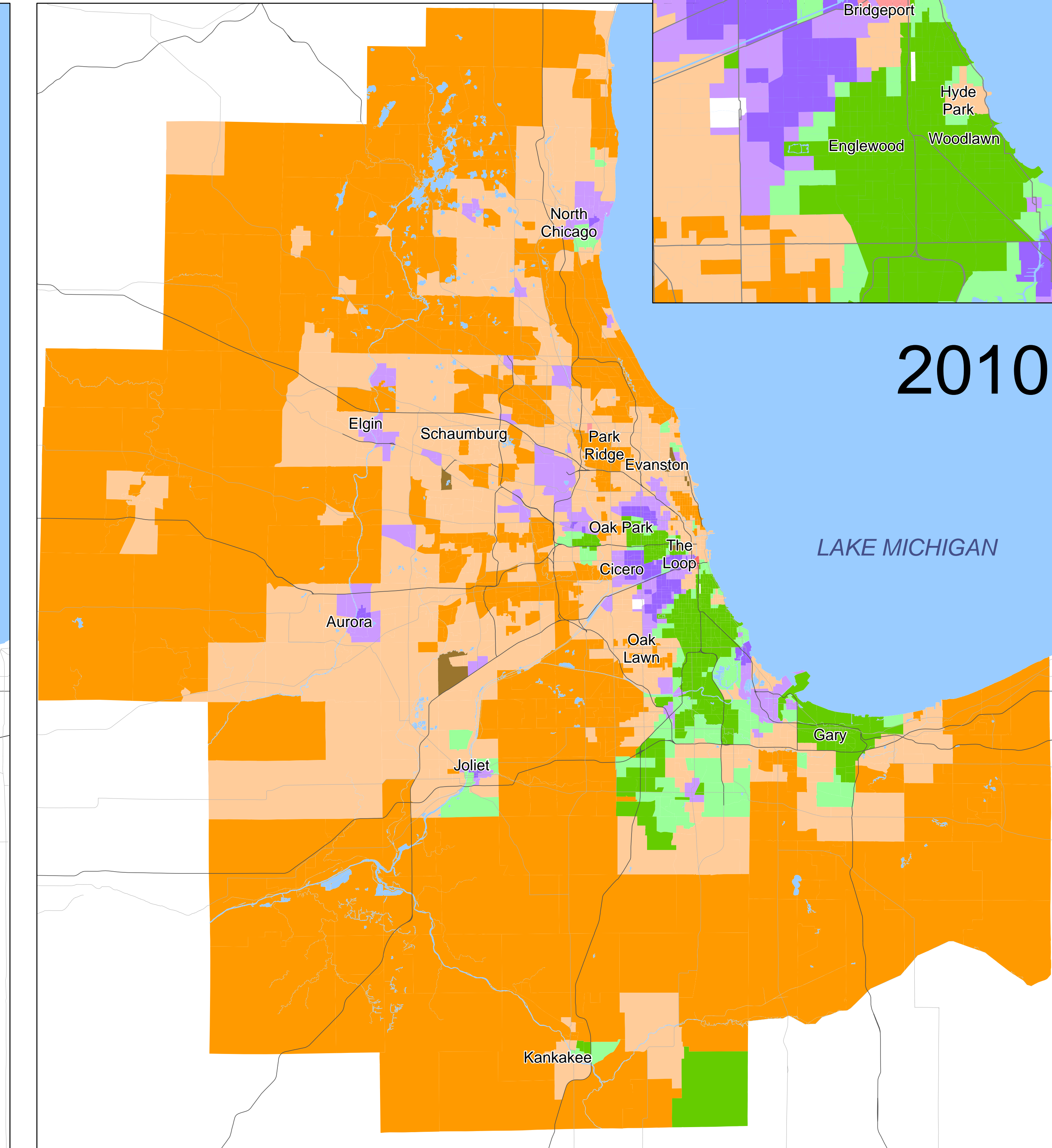
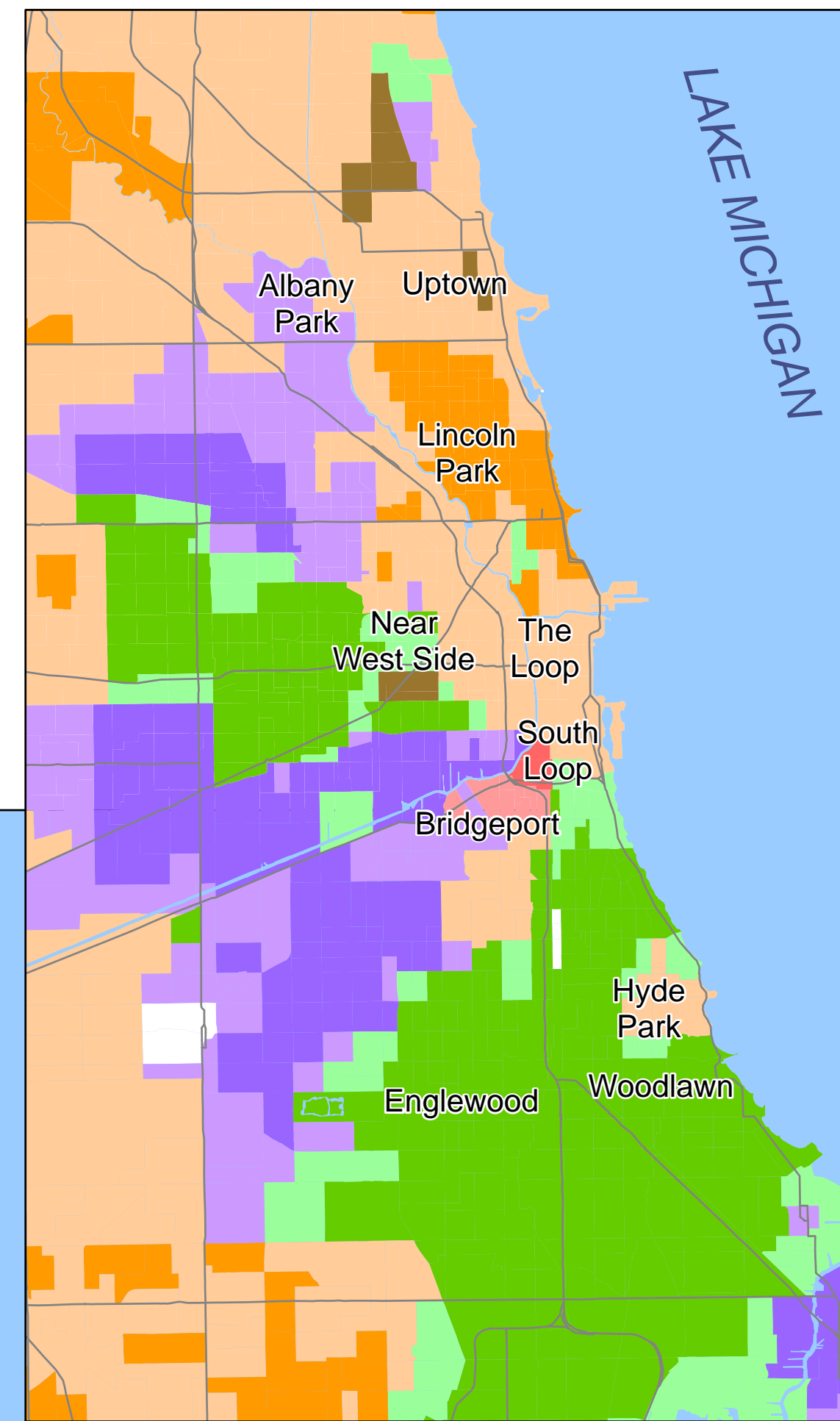
MAP PROJECTION: Universal Transverse Mercator (UTM) Zone 16

DATUM: World Geodetic Survey 1984 (WGS-84)

DATA SOURCES: Census Bureau, United States Department of Commerce and US Geological Survey, United States Department of Interior.

POSITIONAL ACCURACY: Detailed specifications for the positional accuracy of these data are available from the Federal Geographic Data Committee (FGDC), and the Census Bureau and US Geological Survey. In general, positions are shown within 90 meters of their true locations.

ACKNOWLEDGMENTS: Sandy Wong, Minal Caron, Kevin Mwenda, and Michael Wellman contributed to this work. Grant support from the National Science Foundation, the Russell Sage Foundation, and the Neukom Institute at Dartmouth College made the development of these maps possible.



2010

ABOUT THE TRANSITION MATRICES

These matrices show the number of census tracts that changed from one class to another, or that remained unchanged, between census years. Similar matrices for the 53 largest US metropolitan areas, and for all 50 US states, are available at <http://mixedmetro.com>.

TRANSITION MATRIX: 1990 TO 2000

1990		2000								High diversity	Total
		Low diversity				Moderate diversity					
		White	Black	Asian	Latino	White	Black	Asian	Latino		
Low diversity	White	726				309	8		22		1065
	Black		348				11		1		360
	Asian										
	Latino				36		1		11		48
Moderate diversity	White	17	6		15	207	28	3	74	12	362
	Black	1	16			4	54		1	2	78
	Asian			1				6	1		8
	Latino				24	18	2		72		116
High diversity									2	1	3
Total		744	370	1	75	538	104	9	184	15	2040

TRANSITION MATRIX: 2000 TO 2010

2000		2010				Low diversity				Moderate diversity				High diversity	Total
		White	Black	Asian	Latino	White	Black	Asian	Latino						
Low diversity	White	498				244			2					744	
	Black		334			1	35							370	
	Asian			1										1	
	Latino				63	2	1		9					75	
Moderate diversity	White	21			2	395	31	2	84		3			538	
	Black		16		1	12	70		4		1			104	
	Asian						2	7						9	
	Latino				36	18	10		119		1			184	
High diversity						6			2		7			15	
Total		519	350	1	102	678	149	9	220		12			2040	

TRANSITION MATRIX: 1990 TO 2010

1990		2010								High diversity	Total
		Low diversity				Moderate diversity					
		White	Black	Asian	Latino	White	Black	Asian	Latino		
Low diversity	White	485	2		14	474	21		69		1065
	Black		317			4	38		1		360
	Asian										0
	Latino				31	5	2		10		48
Moderate diversity	White	33	12		28	151	37	5	88	8	362
	Black		19		1	12	41		3	2	78
	Asian			1			2	4	1		8
	Latino	1			28	32	8		46	1	116
High diversity									2	1	3
Total		519	350	1	102	678	149	9	220	12	2040